

THE PALMS

www.thepalmsoxnard.com



OFFICE, MEDICAL & RETAIL FOR LEASE | THE PALMS

2000-2301 Outlet Center Dr. | Oxnard, CA 93036

LEASING INQUIRIES

Lisa Shields
RADIUS COMMERCIAL REAL ESTATE
805.879.9639 | lshields@radiusgroup.com
CA LIC. 01742786

9.6.23



MANAGED BY

the **Muller**
company
www.themullercompany.com

OFFICE, MEDICAL & RETAIL FOR LEASE | THE PALMS

2000-2301 Outlet Center Dr. | Oxnard, CA 93036

Property Highlights

Excellent medical, office & retail opportunities

The Palms is centrally located in North Oxnard with easy access off US 101 FWY

Located in the area's central business district near the industrial, medical & retail hubs

On-site Property Management

Surrounding Tenants



Available Space



SUITE #	STATUS	SIZE	USE	LEASE RATE	NNN
#4 (C-220)	AVAILABLE	±5,848 SF	Medical/Retail/Office	\$1.70 NNN	\$0.73

MANAGED BY

the **Muller** company
www.themullercompany.com

LEASING INQUIRIES

Lisa Shields
RADIUS COMMERCIAL REAL ESTATE
805.879.9639 | lshields@radiusgroup.com

CA LIC. 01742786

THE PALMS
www.thepalmsoxnard.com

OFFICE, MEDICAL & RETAIL FOR LEASE | THE PALMS

2000-2301 Outlet Center Dr. | Oxnard, CA 93036

Surrounding Medical & Major Retailers



Traffic Counts

101 Freeway at Rice Ave.:	164,837 ADT
E. Gonzales Rd.:	18,087 ADT
Rice Ave.:	47,691 ADT

Source: SitesUSA 2023

MANAGED BY

THE PALMS 
www.thepalmsoxnard.com

the **Muller** company
www.themullercompany.com

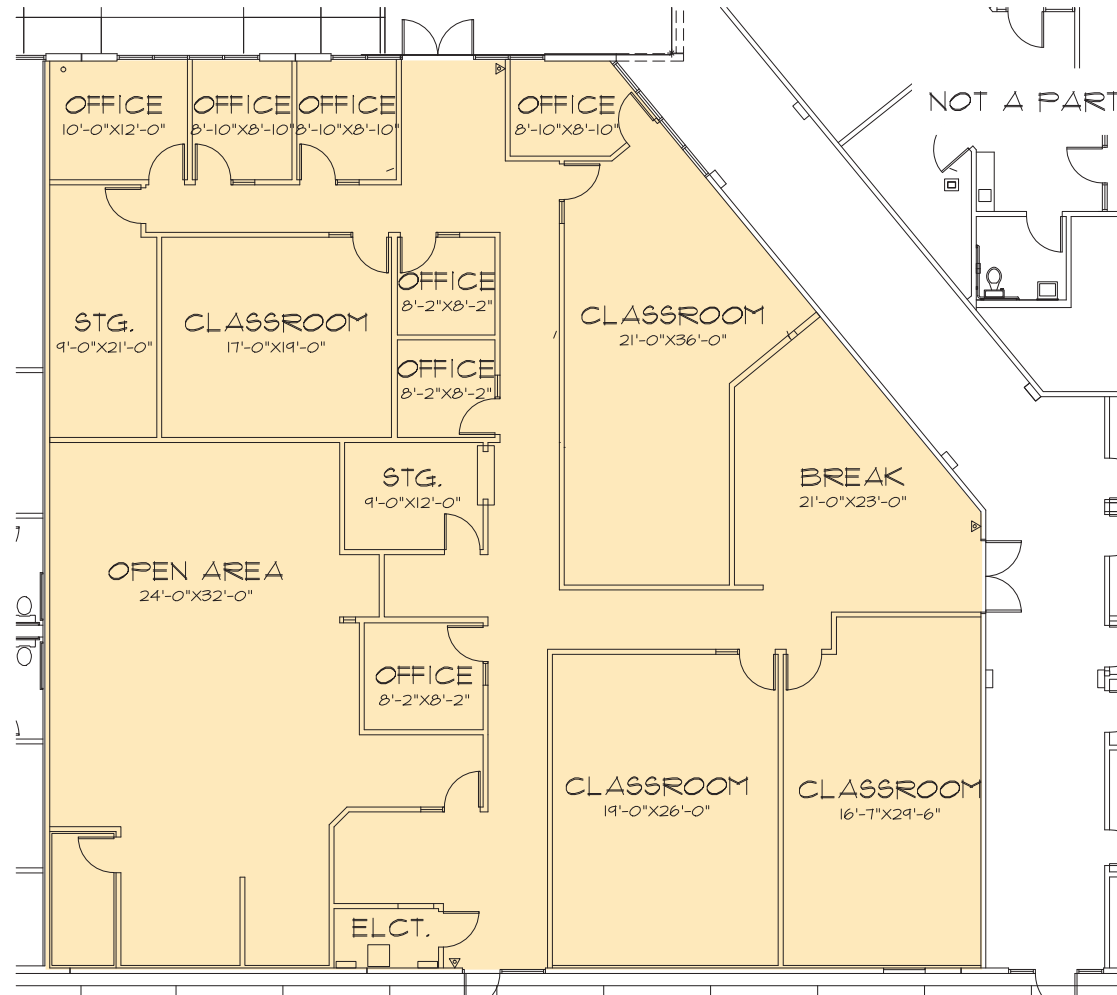
LEASING INQUIRIES

Lisa Shields
RADIUS COMMERCIAL REAL ESTATE
805.879.9639 | lshields@radiusgroup.com
CA LIC. 01742786

OFFICE, MEDICAL & RETAIL FOR LEASE | THE PALMS

2000-2301 Outlet Center Dr. | Oxnard, CA 93036

SUITE C-220 (#4 ON SITE PLAN) | ±5,848 SF



MANAGED BY

THE PALMS 
www.thepalmsoxnard.com

the **Muller**
company
www.themullercompany.com